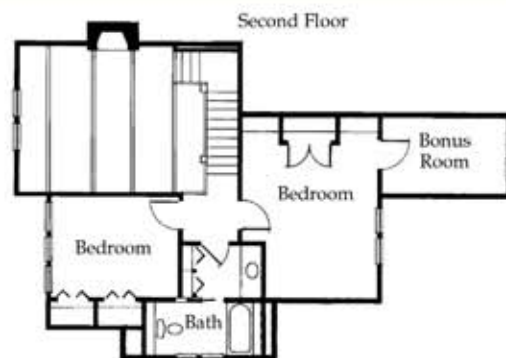
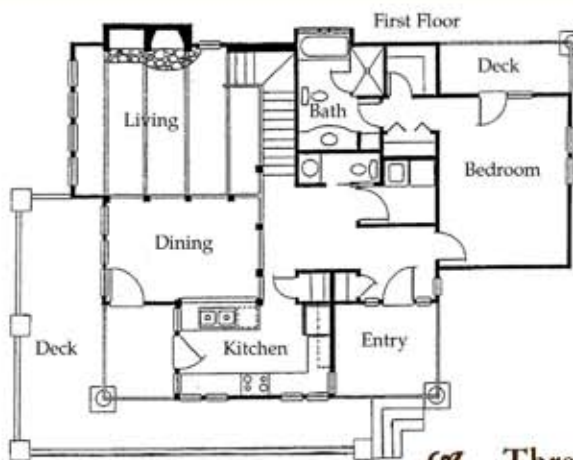




# Thunder Ridge at Echota

*a peaceful haven*



## Detached Home Features

- ⌘ Three Bedrooms, Two Baths with Powder Room or
- ⌘ Four Bedrooms, Three Baths with Powder Room
- ⌘ Three Large Private Decks and Covered Entry
- ⌘ Custom Kitchen and Bath Cabinetry
- ⌘ Open Living Area with Heavy Timber Accents
- ⌘ Cultured Stone Fireplace



All existing Thunder Ridge homes have been custom designed. Floor plans, square footage and selections may vary.